

# HIGHER-ORDER FINITE ELEMENT METHODS FOR ELLIPTIC PROBLEMS WITH INTERFACES

JOHNNY GUZMÁN<sup>1</sup>, MANUEL SÁNCHEZ-URIBE<sup>2</sup> AND MARCUS SARKIS<sup>3</sup>

**ABSTRACT.** We present higher-order piecewise continuous finite element methods for solving a class of interface problems in two dimensions. The method is based on correction terms added to the right-hand side in the standard variational formulation of the problem. We prove optimal error estimates of the methods on general quasi-uniform and shape regular meshes in maximum norms. In addition, we apply the method to a Stokes interface problem, adding correction terms for the velocity and the pressure, obtaining optimal convergence results.

*Keywords:* Interface problems, finite elements, pointwise estimates.

## 1. INTRODUCTION

In this paper we continue the work started in [22] and consider higher-order piecewise continuous finite element approximations to the following interface problem: Let  $\Omega \subset \mathbb{R}^2$  be a polygonal domain with an immersed smooth, closed interface  $\Gamma$  such that  $\bar{\Omega} = \bar{\Omega}^- \cup \bar{\Omega}^+$  and  $\Gamma$  encloses  $\Omega^-$ . Consider the problem

$$\begin{aligned} (1.1a) \quad & -\Delta u = f \quad \text{in } \Omega, \\ (1.1b) \quad & u = 0 \quad \text{on } \partial\Omega, \\ (1.1c) \quad & [u] = 0 \quad \text{on } \Gamma, \\ (1.1d) \quad & [D_{\mathbf{n}}u] = \beta \quad \text{on } \Gamma, \end{aligned}$$

where the jumps across the interface  $\Gamma$  are defined as

$$[u] = u^+ - u^-, \quad [D_{\mathbf{n}}u] = D_{\mathbf{n}^-}u^- + D_{\mathbf{n}^+}u^+ = \nabla u^- \cdot \mathbf{n}^- + \nabla u^+ \cdot \mathbf{n}^+.$$

Here we denote by  $u^\pm = u|_{\Omega^\pm}$  and  $\mathbf{n}^\pm$  is the unit outward pointing normal to  $\Omega^\pm$ .

Numerically, the problem is to find an approximate solution on meshes not aligned with the interface, that is, we allow the interface to cut elements. In this context, the finite difference methods by Peskin [28, 29] (i.e. *immersed boundary method*) and by LeVeque and Li [25] (i.e. *immersed interface method*) are the most renowned. Both methods were developed for more involved problems and for lower-order finite differences techniques. The aim of this paper is to develop higher-order methods based on finite element methods and to establish a priori pointwise error estimates. We consider the Poisson interface problem (1.1) and the Stokes interface problem (1.2) which will be fundamental towards developing very accurate methods with a rigorous finite element analysis for more involved problems.

Naturally, finite element versions of the methods above have appeared; see for example [6, 18, 16, 4, 1, 2, 10, 8, 11, 12, 9, 13, 19, 21, 20, 22]. In our recent work [22] we derived a piecewise linear finite element method for the above problem and proved it is second-order accurate. The attractive feature of the method in [22] is that only the right-hand side needs to be modified, which is one of the advantages also of the immersed boundary method (see [28], [6]) and immersed

---

Mathematics Subject Classification: 65N30, 65N15.

interface method (see [24], [3], [18]) for the above problem. Moreover, the correction term added in [22] is only based on the edges intersecting the interface, this is due to the fact that test functions, linear polynomials, are harmonic.

Motivated by fluid applications, we naturally seek methods for higher-order finite element spaces, and in this context edge based modifications are not enough. Guided by our recent work in the piecewise linear case and also by other papers; see for example [18, 16], it appears to us that the construction and addition to the right-hand side of a correction function is the key to achieve a higher-order method. This also appears in the finite difference context, for example a fourth order method was developed by Marques, Nave and Rosales [27] using a correction function approach. Very recently this idea was materialized by Adjerid, Ben-Romdhane and Lin [1]. They developed higher-order methods for problems involving discontinuous coefficients (which is a more general problem). However, they use strongly the assumption that the interface is a straight line. The key is to use both, the jump condition and the PDE, to find higher-order jump conditions. Inspired by their results, we define correction functions for any polynomial of degree  $k$  for curved interfaces.

The contribution of this paper is in the direction of [1], we develop a higher-order piecewise continuous finite element method for problem (1.1) with curved interfaces. Specifically, in Section 2 we develop notation and propose a finite element method, for each polynomial of degree  $k$ , introducing a correction function  $w_T^u$  and adding it to the variational formulation, only modifying the right-hand side of the equation. To do this, we construct this correction function incorporating the jump conditions of the exact solution on the interface. Besides the method, one important contribution of this paper are the techniques used to provide a priori error estimation analysis for the Poisson and the Stokes interface problems. In Section 3 we prove some necessary properties for the correction function and we prove that our method is  $k + 1$  (mod a logarithmic factor) order accurate in the maximum norm, if piecewise polynomials of degree  $k$  are used.

As mentioned before, in this paper we also consider a finite element approximation to a Stokes interface problem, i.e., under the same geometry assumptions for problem (1.1), we seek for a velocity vector  $\mathbf{u}$  and pressure  $p$  satisfying

$$\begin{aligned}
 (1.2a) \quad & -\Delta \mathbf{u} + \nabla p = \mathbf{f} && \text{in } \Omega, \\
 (1.2b) \quad & \nabla \cdot \mathbf{u} = 0 && \text{in } \Omega, \\
 (1.2c) \quad & \mathbf{u} = 0 && \text{on } \partial\Omega, \\
 (1.2d) \quad & [D_{\mathbf{n}}\mathbf{u} - p\mathbf{n}] = \boldsymbol{\beta} && \text{on } \Gamma,
 \end{aligned}$$

The time-dependent version of problem (1.2) was studied by Peskin and Tu [32], using immersed boundary method. Subsequently, LeVeque and Li [25] consider this problem applying immersed interface method techniques. Some extension and finite element versions of these approaches can be found in [5, 23, 26]. We consider problem (1.2) as one step closer to fluid flow problems, and the objective is to recover the optimal convergence rate for a pair of inf-sup stable finite element subspaces. We will show in Section 4 that the same methodology used to achieve higher-order methods for Poisson problem (1.1) can be applied to Stokes problem (1.2), achieving optimal convergence results.

In Section 5 we test the methods introduced in Section 2 and 4 with some numerical examples that illustrate the properties proven in previous sections. Furthermore, we provide in the Appendix quadrature formulas for the integration over curved regions crucial to achieve higher-order results, although our analysis consider exact integration.

## 2. FINITE ELEMENT METHODS

In this section we present a finite element method for problem (1.1) using continuous piecewise polynomials of degree  $k$ . We assume that the data  $\beta$  is smooth. Furthermore, we assume that  $u^\pm \in C^{k+1}(\overline{\Omega^\pm})$  and  $f|_{\Omega^\pm} \equiv f^\pm \in C^{k-1}(\overline{\Omega^\pm})$ .

**2.1. Notation.** Let  $\mathcal{T}_h$ ,  $0 < h < 1$  be a sequence of triangulations of  $\Omega$ ,  $\overline{\Omega} = \cup_{T \in \mathcal{T}_h} \overline{T}$ , with the elements  $T$  mutually disjoint. We assume the mesh is shape regular and quasi-uniform, see [7]. We note that we adopt the convention that edges, elements, regions are open sets, we use the overline symbol to refer their closure. Let  $h_T$  denote the diameter of the element  $T$  and  $h = \max_T h_T$ . Let  $V_h$  be the space of continuous, piecewise polynomials of degree  $k$ , i.e.,

$$V_h = \{v \in C(\Omega) \cap H_0^1(\Omega) : v|_T \in \mathbb{P}^k(T) \quad \forall T \in \mathcal{T}_h\},$$

where  $\mathbb{P}^k(T)$  is the space of polynomial of degree less than or equal to  $k$  on  $T$  and  $H_0^1(\Omega)$  the space of functions in  $H^1(\Omega)$  vanishing at  $\partial\Omega$ . Next, We define an interpolant onto  $V_h$ .

**Definition 2.1.** Given  $v^\pm \in C(\overline{\Omega^\pm})$ , we define locally  $I_h v \in V_h$  such that

$$(2.1) \quad I_h v|_T(\theta) = \begin{cases} v^-(\theta), & \text{if } \theta \in \overline{\Omega^-} \\ v^+(\theta), & \text{if } \theta \in \Omega^+, \end{cases}$$

for all  $\theta \in T$ , the degree  $k$  Lagrange points of  $T$ .

Note that if  $v$  is continuous  $I_h v$  is simply the Lagrange interpolant of  $v$ . However, if  $v$  is discontinuous then  $I_h v$  interpolates values of  $v$  on Lagrange points not intersecting  $\Gamma$  and for Lagrange points lying on  $\Gamma$  it takes the values of  $v$  coming from  $\Omega^-$  (this is without loss of generality). The following proposition states the stability result of the interpolant  $I_h$ .

**PROPOSITION 1.** Let  $v^\pm \in C(\overline{\Omega^\pm})$  and  $I_h$  defined above, then we have

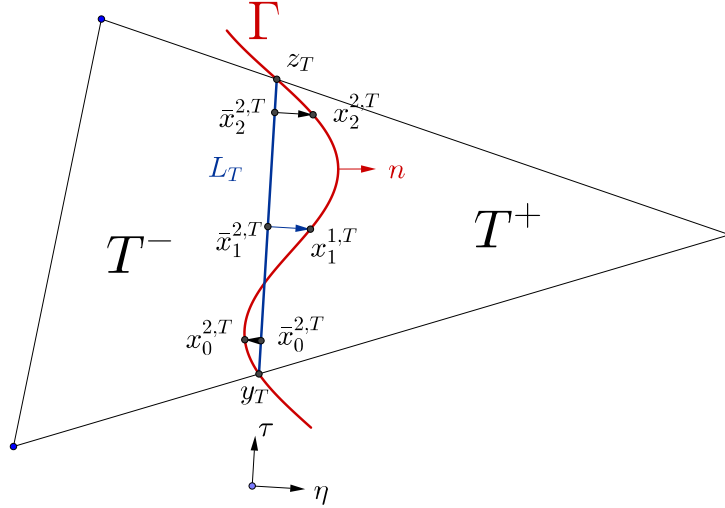
$$(2.2) \quad \|I_h v\|_{L^\infty(T)} \leq C \|v\|_{L^\infty(T)} \quad \forall T \in \mathcal{T}_h.$$

For the sake of making the presentation simpler to the reader, we make the following assumption.

**HYPOTHESIS 1.** We assume here that the interface  $\Gamma$  intersects the boundary of each triangle  $T \in \mathcal{T}_h$  at most at two points. If  $\Gamma$  intersects the boundary of a triangle  $T$  in exactly two points, then these two points must be on different edges  $\bar{e}$  of  $T$ .

Next, let  $\mathcal{T}_h^\Gamma$  denotes the set of triangles  $T \in \mathcal{T}_h$  such that  $T$  intersects  $\Gamma$ , that is,  $T \cap \Gamma \neq \emptyset$ . For each  $T \in \mathcal{T}_h^\Gamma$  let  $y_T$  and  $z_T$  be the two endpoints of  $T \cap \Gamma$ , see figure 1. Let  $L_T$  denote the line segment connecting  $y_T$  and  $z_T$ . Let  $\boldsymbol{\eta}$  be the unit vector perpendicular to  $L_T$  and pointing outward  $T^-$ . Let also  $\boldsymbol{\tau}$  be the unit vector parallel to the line  $L_T$  such that  $\boldsymbol{\tau}$  is the rotation of  $\boldsymbol{\eta}$  by ninety degrees counterclockwise.

For each  $\ell = 0, 1, \dots, k$ , let  $\{\bar{x}_i^{\ell, T}\}_{i=0}^\ell$  denote the Gauss points of the segment  $L_T$ . For each  $\bar{x}_i^{\ell, T}$ , let  $Q_i^{\ell, T}$  be the line perpendicular to the line segment  $L_T$  that passes through the points  $\bar{x}_i^{\ell, T}$ . We then define  $x_i^{\ell, T} = Q_i^{\ell, T} \cap \Gamma$ , for  $i = 0, \dots, \ell$ . Note here that the choice of Gauss points is a preference of the authors, related to the quadrature rules, but not essential in the proofs. We could also use, for instance, equally space points.

FIGURE 1. Illustration of our notation, for  $T \in \mathcal{T}_h^\Gamma$ .

Letting  $T^\pm := T \cap \Omega^\pm$ , we define the following space for  $T \in \mathcal{T}_h^\Gamma$

$$(2.3) \quad S^k(T) = \left\{ w \in L^2(T) : w|_{T^\pm} \in \mathbb{P}^k(T^\pm) \right\}.$$

**2.2. The proposed finite element method.** We now present our finite element method for problem (1.1). Find  $u_h \in V_h$ , such that

$$(2.4) \quad \int_{\Omega} \nabla u_h \cdot \nabla v \, dx = \int_{\Omega} f v \, dx + \int_{\Gamma} \beta v \, ds - \sum_{T \in \mathcal{T}_h^\Gamma} \int_T \nabla w_T^u \cdot \nabla v \, dx$$

for all  $v \in V_h$ , where  $w_T^u$  is a correction function to be defined in Section 2.3.

**2.3. The correction function.** We now show how to construct a piecewise polynomial function  $w_T^u \in S^k(T)$  that will help to correct the right-hand side of the natural finite element method ((2.4) without the correction term) to render it higher-order. We note that the functions  $w_T^u$ , for  $T \in \mathcal{T}_h^\Gamma$ , are discontinuous across elements and satisfy jump conditions at Gauss points on  $\Gamma \cap T$ . Suppose that we give you a function  $u$ , then we let  $w_T^u$  be the unique function in  $S^k(T)$  (see Lemma 2) that satisfies

$$(2.5) \quad \left[ D_{\boldsymbol{\eta}}^{k-\ell} w_T^u(x_i^{\ell,T}) \right] = \left[ D_{\boldsymbol{\eta}}^{k-\ell} u(x_i^{\ell,T}) \right] \quad \text{for } 0 \leq i \leq \ell \text{ and } 0 \leq \ell \leq k,$$

$$(2.6) \quad w_T^u(\theta) = 0 \quad \text{for all degree } k \text{ Lagrange points } \theta \text{ of } T.$$

We would like to stress that if  $u$  is the solution to (1.1) then we know all the jumps of  $u$  in terms of the data  $\beta$  and  $f$  (see Section 2.4) so we can construct  $w_T^u$  a priori. It is important to notice that we impose directional derivatives jump conditions in the  $\boldsymbol{\eta}$ -direction rather than in the  $\boldsymbol{n}$ -direction. A reason for this choice is because we can show unisolvence, when  $\Gamma$  is curved, for any polynomial of degree  $k$ . Additionally, the construction of the correction functions can be made explicitly, that is, it does not require solving any local linear system. Such construction permits us to develop not only an elegant analysis for any polynomial degree  $k$  but also an analysis without imposing strong condition on how  $\Gamma$  intersects an element  $T$  in order to control

the ill conditioning of this matrix. We next show how to transform jump data described in  $\mathbf{n}$ -direction to jump data in the  $\boldsymbol{\eta}$ -direction.

**2.4. Data of jumps.** In this section we show that we can obtain the jumps of higher derivatives of  $u$  across  $\Gamma$  from data,  $\beta$  and  $f$ . Similar ideas were used in [24, 27, 3].

Fix a point  $x \in \Gamma$ . Let  $\mathbf{n}$  be the normal vector to  $\Gamma$  at  $x$ , and  $\mathbf{t}$  the tangent vector to  $\Gamma$  at  $x$ . We clearly have  $[D_{\mathbf{n}}u(x)] = \beta$  and  $[D_{\mathbf{t}}u(x)] = 0$ . In fact, we also have  $[D_{\mathbf{t}}^\ell u(x)] = 0$  for any  $\ell$ . Note that from the Poisson's equation (1.1a), we have

$$-D_{\mathbf{n}}^2 u - D_{\mathbf{t}}^2 u = f \quad \text{in } \Omega^\pm,$$

and so  $[D_{\mathbf{n}}^2 u(x)] = [f(x)]$ . Moreover, we note that  $[D_{\mathbf{t}}D_{\mathbf{n}}u(x)] = D_{\mathbf{t}}[D_{\mathbf{n}}u(x)] = \beta'(x)$  on  $\Gamma$ .

Now we proceed by induction. Suppose we have all jumps of the derivatives of order  $\ell - 1$  in terms of  $\beta$  and  $f$ . Then, we will show how to get the jumps of derivatives of order  $\ell$ . Let  $i + j = \ell$ . If  $i \geq 1$  then

$$[D_{\mathbf{t}}^i D_{\mathbf{n}}^j u(x)] = D_{\mathbf{t}} [D_{\mathbf{t}}^{i-1} D_{\mathbf{n}}^j u(x)]$$

Otherwise, using Laplace's equation we have

$$[D_{\mathbf{n}}^\ell u(x)] = [D_{\mathbf{n}}^{\ell-2} f(x)] - D_{\mathbf{t}} [D_{\mathbf{t}} D_{\mathbf{n}}^{\ell-2} u(x)].$$

Suppose that we would like the jump of  $u$  in a different direction, say  $\boldsymbol{\eta}$ . Then, we write  $\boldsymbol{\eta} = a\mathbf{n} + b\mathbf{t}$  obtaining

$$[D_{\boldsymbol{\eta}}^\ell u(x)] = \sum_{j=0}^{\ell} \binom{\ell}{j} a^j b^{\ell-j} [D_{\mathbf{n}}^j D_{\mathbf{t}}^{\ell-j} u(x)].$$

### 3. ERROR ANALYSIS

The objective of this section is to prove rigorous pointwise error estimates for the above method, which we achieve in Theorems 1 and 2. Before doing this we need some technical results associated to the subspace  $S^k(T)$  and approximation properties of the correction function  $w_T^u$ .

**3.1. Properties of  $S^k(T)$ .** We now introduce some crucial lemmas related to the space  $S^k(T)$ .

LEMMA 1. Let  $T \in \mathcal{T}_h^\Gamma$  and define  $r_T = |L_T|$ . For any  $v \in \mathbb{P}^k(T)$ , we have

$$h_T^j \|D^j v\|_{L^\infty(T)} \leq C h_T^k \sum_{\ell=0}^k \frac{1}{r_T^\ell} \max_{0 \leq i \leq \ell} |D_{\boldsymbol{\eta}}^{k-\ell} v(x_i^{\ell,T})|, \quad j = 0, 1,$$

where the constant  $C$  depends only on the shape regularity of  $T$ , the polynomial degree  $k$  and the regularity of  $\Gamma$ .

*Proof.* Let  $L_T^E$  be the segment with length  $|L_T^E| = 2h_T$ , centered at  $(y_T + z_T)/2$  and aligned with  $L_T$ . This guaranties that any point  $x \in T$  can be projected orthogonally on  $L_T^E$ . Then, using Taylor's expansion on  $T$  from  $L_T^E$ , we can easily show that

$$h_T^j \|D^j v\|_{L^\infty(T)} \leq C \sum_{\ell=0}^k h_T^{k-\ell} \|D_{\boldsymbol{\eta}}^{k-\ell} v\|_{L^\infty(L_T^E)}.$$

Using Taylor's theorem on  $L_T^E$  from a point of  $L_T$  we get

$$\|D_{\boldsymbol{\eta}}^{k-\ell} v\|_{L^\infty(L_T^E)} \leq C \sum_{s=0}^{\ell} h_T^s \|D_{\boldsymbol{\tau}}^s D_{\boldsymbol{\eta}}^{k-\ell} v\|_{L^\infty(L_T)}, \quad j = 0, 1.$$

Inverse inequality gives

$$\|D_{\tau}^s D_{\eta}^{k-\ell} v\|_{L^\infty(L_T)} \leq \frac{C}{r_T^s} \|D_{\eta}^{k-\ell} v\|_{L^\infty(L_T)}.$$

We therefore have

$$\begin{aligned} h_T^j \|D^j v\|_{L^\infty(T)} &\leq C h_T^k \sum_{\ell=0}^k h_T^{-\ell} \sum_{s=0}^{\ell} \frac{h_T^s}{r_T^s} \|D_{\eta}^{k-\ell} v\|_{L^\infty(L_T)} \\ &= C h_T^k \sum_{\ell=0}^k \sum_{s=0}^{\ell} \frac{1}{h_T^{\ell-s}} \frac{1}{r_T^s} \|D_{\eta}^{k-\ell} v\|_{L^\infty(L_T)} \\ &\leq C h_T^k \sum_{\ell=0}^k \sum_{s=0}^{\ell} \frac{1}{r_T^{\ell-s}} \frac{1}{r_T^s} \|D_{\eta}^{k-\ell} v\|_{L^\infty(L_T)} \\ &= C h_T^k \sum_{\ell=0}^k \frac{1}{r_T^{\ell}} \|D_{\eta}^{k-\ell} v\|_{L^\infty(L_T)}, \end{aligned}$$

where we used that  $r_T \leq h_T$ .

To bound right-hand side above, we use induction on  $\ell$ . First, using that  $D_{\eta}^k v$  is a constant we have

$$\|D_{\eta}^k v\|_{L^\infty(L_T)} = |D_{\eta}^k v(x_0^{0,T})|.$$

Assume that we have proved

$$(3.1) \quad \sum_{\ell=m+1}^k \frac{1}{r_T^{\ell}} \|D_{\eta}^{k-\ell} v\|_{L^\infty(L_T)} \leq C \sum_{\ell=m+1}^k \frac{1}{r_T^{\ell}} \max_{0 \leq i \leq \ell} |D_{\eta}^{k-\ell} v(x_i^{\ell,T})|,$$

then we want to prove that

$$(3.2) \quad \sum_{\ell=m}^k \frac{1}{r_T^{\ell}} \|D_{\eta}^{k-\ell} v\|_{L^\infty(L_T)} \leq C \sum_{\ell=m}^k \frac{1}{r_T^{\ell}} \max_{0 \leq i \leq \ell} |D_{\eta}^{k-\ell} v(x_i^{\ell,T})|.$$

Since  $D_{\eta}^{k-m} v$  is a polynomial of degree  $m$ , we have that

$$\|D_{\eta}^{k-m} v\|_{L^\infty(L_T)} \leq C \max_{0 \leq i \leq m} |D_{\eta}^{k-m} v(\bar{x}_i^{m,T})|.$$

Using Taylor's theorem we have

$$|D_{\eta}^{k-m} v(\bar{x}_i^{m,T})| \leq |D_{\eta}^{k-m} v(x_i^{m,T})| + \sum_{\ell=m+1}^k d^{\ell-m} \|D_{\eta}^{k-\ell} v\|_{L^\infty(L_T)},$$

where  $d = \max_{0 \leq i \leq \ell \leq k} |x_i^{\ell,T} - \bar{x}_i^{\ell,T}|$ . It is clear that  $d \leq C r_T^2$ , since we have assumed that  $\Gamma$  is smooth, that is the radius of curvature is  $O(1)$ , however we note that we will only use that  $d \leq C r_T$ . Hence, we have

$$\frac{1}{r_T^m} \max_{0 \leq i \leq m} |D_{\eta}^{k-m} v(\bar{x}_i^{m,T})| \leq \frac{1}{r_T^m} \max_{0 \leq i \leq m} |D_{\eta}^{k-m} v(x_i^{m,T})| + C \sum_{\ell=m+1}^k \frac{1}{r_T^{2m-\ell}} \|D_{\eta}^{k-\ell} v\|_{L^\infty(L_T)}.$$

However,  $\frac{1}{r_T^{2m-\ell}} \leq \frac{1}{r_T^{\ell}}$  for  $\ell \geq m+1$  and so using (3.1) we arrive at (3.2).  $\square$

The following is a fundamental lemma for the construction of  $w_T^u$  and the estimation of  $h_T^j \|D^j w_T^u\|_{L^\infty(T^\pm)}$  when we choose  $c_{i,\ell} = \left[ D_{\boldsymbol{\eta}}^{k-\ell} u(x_i^{\ell,T}) \right]$ , see equation (2.5).

LEMMA 2. *Given data  $\{c_{i,\ell}\}$  for  $0 \leq i \leq \ell$  and  $0 \leq \ell \leq k$ . There exists a unique function  $w \in S^k(T)$ , such that*

$$(3.3) \quad \left[ D_{\boldsymbol{\eta}}^{k-\ell} w(x_i^{\ell,T}) \right] = c_{i,\ell} \quad \text{for } 0 \leq i \leq \ell \text{ and } 0 \leq \ell \leq k,$$

$$(3.4) \quad w(\theta) = 0 \quad \text{for all the degree } k \text{ Lagrange points } \theta \text{ of } T,$$

with the following bound

$$(3.5) \quad h_T^j \|D^j w\|_{L^\infty(T^\pm)} \leq C h_T^k \sum_{\ell=0}^k \frac{1}{r_T^\ell} \max_{0 \leq i \leq \ell} |c_{i,\ell}|, \quad \text{for } j = 0, 1,$$

where  $C$  depends only on the shape regularity of  $\mathcal{T}_h$ , the polynomial degree  $k$  and the regularity of  $\Gamma$ .

*Proof.* We will construct  $w$  of the form  $w = z - I_h z$ , where  $z \in S^k(T)$ . Notice that, by definition of  $I_h$ ,  $z - I_h z$  vanishes on the  $(k+1)(k+2)/2$  Lagrange points of  $T$ , satisfying (3.4). Moreover, since  $I_h z$  is smooth on  $T$

$$\left[ D_{\boldsymbol{\eta}}^{k-\ell} w(x_i^{\ell,T}) \right] = \left[ D_{\boldsymbol{\eta}}^{k-\ell} z(x_i^{\ell,T}) \right].$$

The function  $z$  will be given by

$$z = \begin{cases} 0 & \text{in } T^+, \\ v & \text{in } T^-, \end{cases}$$

where  $v$  is the unique polynomial on  $\mathbb{P}^k$ , such that

$$D_{\boldsymbol{\eta}^-}^{k-\ell} v(x_i^{\ell,T}) = c_{i,\ell} \quad \text{for } 0 \leq i \leq \ell \text{ and } 0 \leq \ell \leq k.$$

The existence and uniqueness of  $v$  follow from representing  $v = v(s, r)$  as a polynomial of degree  $k$  in  $r$  ( $\boldsymbol{\tau}$ -direction) and  $s$  ( $\boldsymbol{\eta}$ -direction), where  $s = 0$  represents the straight line passing through  $y_T$  and  $z_T$ , then by decomposing

$$v(s, r) = p_k(r) + s p_{k-1}(r) + s^2 p_{k-2}(r) + \cdots + s^k p_0,$$

where  $p_\ell$ , for  $0 \leq \ell \leq k$ , is a polynomial of degree  $\ell$  in  $r$ . It is easy to see, by using interpolation at the Gauss point  $\bar{x}_0^{0,T}$ , that  $p_0$  exists and is unique, then by using interpolation at the Gauss points  $\bar{x}_1^{0,T}$  and  $\bar{x}_1^{1,T}$  that  $p_1(r)$  exists and is unique, and so on.

According to Lemma 1, we have the following bound

$$(3.6) \quad h_T^j \|D^j v\|_{L^\infty(T)} \leq C h_T^k \sum_{\ell=0}^k \frac{1}{r_T^\ell} \max_{0 \leq i \leq \ell} |c_{i,\ell}|.$$

Hence,  $w$  satisfies (3.3). Moreover,

$$h_T^j \|D^j w\|_{L^\infty(T^\pm)} = h_T^j \|D^j (z - I_h z)\|_{L^\infty(T^\pm)} \leq h_T^j \|D^j v\|_{L^\infty(T^-)} + h_T^j \|D^j I_h z\|_{L^\infty(T)}.$$

Using an inverse estimate and stability of the interpolant, we have

$$h_T^j \|D^j I_h z\|_{L^\infty(T)} \leq C \|I_h z\|_{L^\infty(T)} \leq C \|z\|_{L^\infty(T)} \leq C \|v\|_{L^\infty(T^-)}.$$

Hence,

$$h_T^j \|D^j w\|_{L^\infty(T^\pm)} \leq h_T^j \|D^j v\|_{L^\infty(T^-)} + \|v\|_{L^\infty(T^-)}.$$

We get (3.5) once we apply (3.6). □

**3.2. Approximation properties of  $w_T^u$ .** Since we are assuming  $u^\pm \in C^{k+1}(\Omega^\pm)$  and  $\Gamma$  is smooth, there exist extensions  $u_E^\pm \in C^{k+1}(\Omega)$  (see Lemma 6.27 [14]), such that the following holds

$$u_E^\pm = u^\pm \quad \text{on } \Omega^\pm, \quad \|u_E^\pm\|_{C^{k+1}(\Omega)} \leq C \|u^\pm\|_{C^{k+1}(\Omega^\pm)}.$$

Let  $B_{2r_T} \subset T^E$  be a ball of radius  $2r_T$  that encloses  $T^\Gamma$ . Here  $T^E$  is the smallest patch of triangles of the mesh  $\mathcal{T}_h$  on the neighborhood of  $T \in \mathcal{T}_h^\Gamma$ . Let  $J_T$  be the  $L^2$  projection onto polynomials of degree  $k$  in  $B_{2r_T}$  and consider its natural extension to all of  $T^E$ . Then, we can prove the following lemma.

LEMMA 3. *Let  $w \in C^{k+1}(T^E)$ , then we have*

$$(3.7) \quad r_T^j \|D^j(J_T(w) - w)\|_{L^\infty(B_{2r_T})} \leq C r_T^{k+1} \|w\|_{C^{k+1}(B_{2r_T})} \quad \text{for } 0 \leq j \leq k,$$

and

$$(3.8) \quad h_T^j \|D^j(J_T(w) - w)\|_{L^\infty(T^E)} \leq C h_T^{k+1} \|w\|_{C^{k+1}(T^E)} \quad \text{for } 0 \leq j \leq k.$$

*Proof.* The inequality (3.7) is a standard approximation of the  $L^2$  projection. To prove (3.8) we apply Taylor's theorem to get

$$h_T^j \|D^j(J_T(w) - w)\|_{L^\infty(T^E)} \leq h_T^j \sum_{\ell=1}^{k-j} h_T^\ell \|D^{j+\ell}(J_T(w) - w)\|_{L^\infty(B_{2r_T})} + h_T^{k+1} \|w\|_{C^{k+1}(T^E)}.$$

The result follows after applying (3.7) and using that  $r_T \leq h_T$ .  $\square$

The following lemma establishes the approximation result for the correction function defined in Section 2.3.

LEMMA 4. *Suppose the solution  $u$  to problem (1.1) satisfies  $u^\pm \in C^{k+1}(\Omega^\pm)$ , and  $w_T^u$  is the correction function defined by (3.3) and (3.4). Then, we have*

$$h_T^j \|D^j(u - I_h u - w_T^u)\|_{L^\infty(T^\pm)} \leq C h_T^{k+1} \left( \|u_E^+\|_{C^{k+1}(T^E)} + \|u_E^-\|_{C^{k+1}(T^E)} \right), \quad \text{for } j = 0, 1$$

and  $C$  depends only on the shape regularity of  $T$ , the polynomial degree  $k$  and the regularity of  $\Gamma$ .

*Proof.* We will define  $v \in S^k(T)$  (see (2.3)) as follows

$$v = \begin{cases} J_T(u_E^+) & \text{on } T^+, \\ J_T(u_E^-) & \text{on } T^-. \end{cases}$$

Clearly  $v - I_h v = w_T^v$  by Lemma 2. Hence, we have

$$\begin{aligned} h_T^j \|D^j(u - I_h u - w_T^u)\|_{L^\infty(T^\pm)} &= h_T^j \|D^j((u - v) + (v - I_h v) + I_h(v - u) - w_T^u)\|_{L^\infty(T^\pm)} \\ &= h_T^j \|D^j((u - v) - I_h(u - v) - w_T^{u-v})\|_{L^\infty(T^\pm)} \\ &\leq C h_T^j (\|D^j(u - v)\|_{L^\infty(T^\pm)} + \|D^j w_T^{u-v}\|_{L^\infty(T^\pm)}) \\ &\quad + C \|u - v\|_{L^\infty(T)}, \end{aligned}$$

where we used  $w_T^{u-v} = w_T^u - w_T^v$ , an inverse estimate and the stability of  $I_h$  in the max-norm.

Using (3.8) we get

$$h_T^j \|D^j(u - v)\|_{L^\infty(T^\pm)} + \|u - v\|_{L^\infty(T^\pm)} \leq C h_T^{k+1} (\|u_E^-\|_{C^{k+1}(T^E)} + \|u_E^+\|_{C^{k+1}(T^E)}).$$



Estimate (3.5) implies

$$h_T^j \|w_T^{u-v}\|_{L^\infty(T)} \leq C h_T^k \sum_{\ell=0}^k \frac{1}{r_T^{k-\ell}} \| [D_{\mathbf{n}}^\ell(v-u)] \|_{L^\infty(T \cap \Gamma)}.$$

Applying (3.7) we obtain

$$\sum_{\ell=0}^k \frac{1}{r_T^{k-\ell}} \| [D_{\mathbf{n}}^\ell(v-u)] \|_{L^\infty(T \cap \Gamma)} \leq C r_T (\|u_E^+\|_{C^{k+1}(B_{2r_T})} + \|u_E^-\|_{C^{k+1}(B_{2r_T})}),$$

which completes the proof.  $\square$

**3.3. Error estimates.** The next lemma will show that the correction term  $w_T^u$  in the finite element method (2.4) will allow us to compare  $I_h u - u_h$ .

**LEMMA 5.** *Let  $u^\pm \in C^{k+1}(\Omega^\pm)$  be the solution of (1.1) and  $u_h$  be the solution of (2.4). Then, it holds*

$$\int_{\Omega} \nabla(I_h u - u_h) \cdot \nabla v \, dx \leq C h^k \|\nabla v\|_{L^1(\Omega)} \left( \|u^+\|_{C^{k+1}(\Omega^+)} + \|u^-\|_{C^{k+1}(\Omega^-)} \right) \quad \forall v \in V_h,$$

where  $C$  depends only on the shape regularity of  $\{\mathcal{T}_h\}_{h>0}$ , the polynomial degree  $k$  and the regularity of  $\Gamma$ .

*Proof.*

$$\begin{aligned} \int_{\Omega} \nabla(I_h u - u_h) \cdot \nabla v \, dx &= \int_{\Omega} \nabla(I_h u - u) \cdot \nabla v \, dx + \int_{\Omega} \nabla u \cdot \nabla v \, dx - \int_{\Omega} \nabla u_h \cdot \nabla v \, dx \\ &= \int_{\Omega} \nabla(I_h u - u) \cdot \nabla v \, dx + \sum_{T \in \mathcal{T}_h^\Gamma} \int_T \nabla w_T^u \cdot \nabla v \, dx \\ &= \sum_{T \in \mathcal{T}_h \setminus \mathcal{T}_h^\Gamma} \int_T \nabla(I_h u - u) \cdot \nabla v \, dx + \sum_{T \in \mathcal{T}_h^\Gamma} \int_T \nabla(u - I_h u - w_T^u) \cdot \nabla v \, dx \end{aligned}$$

The result now easily follows from Lemma 4 and the fact that  $u$  is smooth on  $T \in \mathcal{T}_h \setminus \mathcal{T}_h^\Gamma$ .  $\square$

From the above lemma we can easily prove an optimal estimate in the  $H^1$  semi-norm:

$$\|\nabla(I_h u - u_h)\|_{L^2(\Omega)} \leq C h^k \left( \|u^+\|_{C^{k+1}(\Omega^+)} + \|u^-\|_{C^{k+1}(\Omega^-)} \right).$$

However, our goal is to prove estimates in the maximum-norm as our next result states. A slightly sub-optimal (off by a log factor) can be proved if we use the above lemma directly. In order to prove the optimal estimate, we will give a more involved argument.

**Theorem 1.** *Suppose that  $\Omega$  is convex. Let  $u^\pm \in C^{k+1}(\Omega^\pm)$  be the solution of (1.1) and  $u_h$  be the solution of (2.4), then*

$$\|\nabla(I_h u - u_h)\|_{L^\infty(\Omega)} \leq C h^k (\|u^+\|_{C^{k+1}(\Omega^+)} + \|u^-\|_{C^{k+1}(\Omega^-)}),$$

where  $C$  depends only on the shape regularity of  $\{\mathcal{T}_h\}_{h>0}$ , the polynomial degree  $k$  and the regularity of  $\Gamma$ .

*Proof.* Let  $e_h = I_h u - u_h$  and suppose that the maximum of  $|\partial_{x_i} e_h|$  occurs at  $z \in \Omega$  (for some fixed  $1 \leq i \leq 2$ ). Suppose  $z \in T$ , for some  $T \in \mathcal{T}_h$ . Consider now the regularized Dirac delta function  $\delta_h^z = \delta_h \in C_0^1(T_z)$  (see [7]), which satisfies

$$(3.9) \quad r(z) = (r, \delta_h)_{T_z}, \quad \forall r \in P^k(T_z),$$

and has the following property

$$(3.10) \quad \|\delta_h\|_{W^{r,q}(T_z)} \leq Ch^{-r-2(1-1/q)}, \quad 1 \leq q \leq \infty, \quad r = 0, 1.$$

For each  $i = 1, 2$ , define the approximate Green's function  $g \in H_0^1(\Omega)$ , which solves the following equation:

$$(3.11a) \quad -\Delta g = \partial_{x_i} \delta_h \quad \text{in } \Omega,$$

$$(3.11b) \quad g = 0 \quad \text{on } \partial\Omega.$$

We also consider its finite element approximation  $g_h \in V_h$  that satisfies

$$(3.12) \quad \int_{\Omega} \nabla g_h \cdot \nabla v \, dx = \int_{\Omega} v \partial_{x_i} \delta_h \, dx \quad \text{for all } v \in V_h.$$

From the work of Scott and Rannacher [30] we have

$$(3.13) \quad \|\nabla(g - g_h)\|_{L^1(\Omega)} \leq C.$$

Moreover, using a dyadic decomposition one can show

$$(3.14) \quad \|\nabla g\|_{L^1(\Omega)} \leq C \log(1/h).$$

A log free estimate holds if we consider a smaller domain, i.e.

$$(3.15) \quad \|\nabla g\|_{L^1(S^\Gamma)} \leq C,$$

where  $S^\Gamma = \{x \in \Omega : \text{dist}(x, \Gamma) \leq \kappa h\}$  for some fixed constant  $\kappa$ ; see for instance [22]. Hence, combining (3.13) and (3.15) we have

$$(3.16) \quad \|\nabla g_h\|_{L^1(S^\Gamma)} \leq C.$$

We start by using the definition of  $\delta_h$  and problem (3.12)

$$\|\partial_{x_i} e_h\|_{L^\infty(\Omega)} = |\partial_{x_i} e_h(z)| = \left| \int_{\Omega} \delta_h \partial_{x_i} e_h \, dx \right| = \left| \int_{\Omega} \partial_{x_i} \delta_h e_h \, dx \right|.$$

Then, we see that

$$\|\partial_{x_i} e_h\|_{L^\infty(\Omega)} = \left| \int_{\Omega} \nabla g \cdot \nabla e_h \, dx \right| = \left| \int_{\Omega} \nabla g_h \cdot \nabla e_h \, dx \right|.$$

If we follow the proof of Lemma 5 we see that

$$\int_{\Omega} \nabla g_h \cdot \nabla e_h \, dx = J_1 + J_2,$$

where

$$J_1 = \sum_{T \in \mathcal{T}_h \setminus \mathcal{T}_h^\Gamma} \int_T \nabla(I_h u - u) \cdot \nabla g_h \, dx,$$

and

$$J_2 = \sum_{T \in \mathcal{T}_h^\Gamma} \int_T \nabla(I_h u + w_T^u - u) \cdot \nabla g_h \, dx.$$

Applying Cauchy-Schwarz inequality to  $J_2$  we get

$$J_2 \leq C \|\nabla g_h\|_{L^1(S^\Gamma)} \max_{T \in \mathcal{T}_h^\Gamma} \|\nabla(I_h u + w_T^u - u)\|_{L^\infty(T)}.$$

Moreover, using (3.16) and Lemma 4 we have

$$J_2 \leq C h^k (\|u^+\|_{C^{k+1}(\Omega^+)} + \|u^-\|_{C^{k+1}(\Omega^-)}).$$

To give an estimate for  $J_1$  we define  $R_h = \cup_{T \in \mathcal{T}_h \setminus \mathcal{T}_h^\Gamma} T$ . Now, adding and subtracting  $\nabla g$ , we obtain

$$J_1 = \sum_{T \in \mathcal{T}_h \setminus \mathcal{T}_h^\Gamma} \int_T \nabla(I_h u - u) \cdot \nabla g_h dx = \int_{R_h} (\nabla(I_h u - u) \cdot \nabla(g_h - g) + \nabla(I_h u - u) \cdot \nabla g) dx.$$

Using (3.13), we have

$$\int_{R_h} \nabla(I_h u - u) \cdot \nabla(g_h - g) dx \leq C h^k (\|u^+\|_{C^{k+1}(\Omega^+)} + \|u^-\|_{C^{k+1}(\Omega^-)}).$$

For the remaining term we integrate by parts to get

$$\int_{R_h} \nabla(I_h u - u) \cdot \nabla g dx = \int_{R_h} (I_h u - u) \partial_{x_i} \delta_h dx + \int_{\partial R_h \setminus \partial \Omega} (I_h u - u) D_{\mathbf{n}} g ds.$$

Here we used that, since  $\Omega$  is convex,  $\nabla g$  is continuous and so integration by parts makes sense.

Clearly we have

$$\int_{R_h} (I_h u - u) \partial_{x_i} \delta_h dx \leq C h^k (\|u^+\|_{C^{k+1}(\Omega^+)} + \|u^-\|_{C^{k+1}(\Omega^-)}).$$

Finally, we have

$$\begin{aligned} \int_{\partial R_h \setminus \partial \Omega} (I_h u - u) D_{\mathbf{n}} g ds &\leq C \|I_h u - u\|_{L^\infty(R_h)} \|D_{\mathbf{n}} g\|_{L^1(\partial R_h \setminus \partial \Omega)} \\ &\leq C h^{k+1} \|D_{\mathbf{n}} g\|_{L^1(\partial R_h \setminus \partial \Omega)} (\|u^+\|_{C^{k+1}(\Omega^+)} + \|u^-\|_{C^{k+1}(\Omega^-)}). \end{aligned}$$

In Appendix A we prove the bound

$$(3.17) \quad \|D_{\mathbf{n}} g\|_{L^1(\partial R_h \setminus \partial \Omega)} \leq \frac{C}{h},$$

which will then show that

$$J_1 \leq C h^k (\|u^+\|_{C^{k+1}(\Omega^+)} + \|u^-\|_{C^{k+1}(\Omega^-)}),$$

and will complete the proof.  $\square$

Next, we will prove an estimate for the error in the maximum norm. In the case there is no interface a logarithmic factor is not present for  $k \geq 2$  (see [7]), however, we do not see how to remove this factor in our setting.

**Theorem 2.** *Suppose that  $\Omega$  is convex. Let  $u^\pm \in C^{k+1}(\Omega^\pm)$  be the solution of (1.1) and  $u_h$  be the solution of (2.4), then*

$$(3.18) \quad \|I_h u - u_h\|_{L^\infty(\Omega)} \leq C h^{k+1} \log(1/h) (\|u^+\|_{C^{k+1}(\Omega^+)} + \|u^-\|_{C^{k+1}(\Omega^-)}).$$

where  $C$  depends only on the shape regularity of  $\{\mathcal{T}_h\}_{h>0}$ , the polynomial degree  $k$  and the regularity of  $\Gamma$ .

*Proof.* We follow the proof of Theorem 5 in [22]. Let  $z \in \Omega$  be arbitrary and let  $\delta_h = \delta_h^z$  defined in proof of Theorem 1. Let  $\tilde{g}$  satisfy

$$(3.19) \quad -\Delta \tilde{g} = \delta_h \quad \text{in } \Omega,$$

$$(3.20) \quad \tilde{g} = 0 \quad \text{on } \partial\Omega,$$

and consider its continuous piecewise linear finite element approximation  $\tilde{g}_h$ . Then

$$\begin{aligned} (I_h u - u_h)(z) &= \int_{\Omega} (I_h u - u_h) \delta_h dx = \int_{\Omega} \nabla(I_h u - u_h) \cdot \nabla \tilde{g}_h dx \\ &= \sum_{T \in \mathcal{T}_h \setminus \mathcal{T}_h^\Gamma} \int_T \nabla(I_h u - u) \cdot \nabla \tilde{g}_h dx + \sum_{T \in \mathcal{T}_h^\Gamma} \int_T \nabla(I_h u + w_T^u - u) \cdot \nabla \tilde{g}_h dx \\ &=: J_1 + J_2. \end{aligned}$$

We first give a bound for  $J_2$

$$\begin{aligned} J_2 &\leq C \max_{T \in \mathcal{T}_h^\Gamma} \|I_h u + w_T^u - u\|_{L^\infty(T)} \|\nabla \tilde{g}_h\|_{L^1(T)} \\ &\leq Ch^k \left( \|u^+\|_{C^{k+1}(\Omega^+)} + \|u^-\|_{C^{k+1}(\Omega^-)} \right) \|\nabla \tilde{g}_h\|_{L^1(S^\Gamma)} \\ &\leq Ch^k \left( \|u^+\|_{C^{k+1}(\Omega^+)} + \|u^-\|_{C^{k+1}(\Omega^-)} \right) \left( \|\nabla \tilde{g}_h - \nabla \tilde{g}\|_{L^1(S^\Gamma)} + \|\nabla \tilde{g}\|_{L^1(S^\Gamma)} \right). \end{aligned}$$

In [22] we proved  $\|\nabla \tilde{g}\|_{L^1(S^\Gamma)} \leq Ch \log(1/h)$ , therefore

$$J_2 \leq Ch^{k+1} \log(1/h) \left( \|u^+\|_{C^{k+1}(\Omega^+)} + \|u^-\|_{C^{k+1}(\Omega^-)} \right).$$

Now for  $J_1$ , we will use the Raviart-Thomas projection (see [31])  $\Pi : H^1(\Omega) \rightarrow \Phi_h^D$ , defined locally for any  $T \in \mathcal{T}_h$ ,  $\Pi|_T : H^1(T) \rightarrow RT_0(T)$ , where

$$RT_0(T) = [\mathbb{P}^0(T)]^2 \oplus x\mathbb{P}^0(T), \quad \Phi_h^D = \{ \phi \in [L^2(\Omega)]^2 : \phi|_T \in RT_0(T) \forall T \in \mathcal{T}_h \}.$$

Then, we observe

$$J_1 = J_1(\nabla \tilde{g}_h) = J_1(\nabla \tilde{g}_h - \Pi \nabla \tilde{g}) + J_1(\Pi \nabla \tilde{g}).$$

In the Appendix of [22] we prove the estimate  $\|\nabla \tilde{g}_h - \Pi \nabla \tilde{g}\|_{L^1(\Omega)} \leq h \log 1/h$ , then we clearly we have

$$\begin{aligned} J_1(\nabla \tilde{g}_h - \Pi \nabla \tilde{g}) &\leq Ch^k \left( \|u^+\|_{C^{k+1}(\Omega^+)} + \|u^-\|_{C^{k+1}(\Omega^-)} \right) \|\nabla \tilde{g}_h - \Pi \nabla \tilde{g}\|_{L^1(\Omega)} \\ &\leq Ch^{k+1} \log(1/h) \left( \|u^+\|_{C^{k+1}(\Omega^+)} + \|u^-\|_{C^{k+1}(\Omega^-)} \right). \end{aligned}$$

Using that  $\Pi(\nabla \tilde{g})$  is piecewise constant and has continuous normal components across edges, we have after integration by parts

$$J_1(\Pi \nabla \tilde{g}) = \sum_{e \in \mathcal{E}_h^{\Gamma, \partial}} \int_e (I_h u - u) \Pi \nabla \tilde{g} \cdot n,$$

where  $\mathcal{E}_h^{\Gamma, \partial}$  are set of edges that are both an edge of a triangle in  $\mathcal{T}_h \setminus \mathcal{T}_h^\Gamma$  and a triangle in  $\mathcal{T}_h \setminus \mathcal{T}_h^\Gamma$ .

Therefore, we see that

$$\begin{aligned} J_1(\Pi\nabla\tilde{g}) &= \sum_{e \in \mathcal{E}_h^{\Gamma,\partial}} \int_e (I_h u - u) \Pi\nabla\tilde{g} \cdot \mathbf{n} \\ &\leq Ch^k \|\Pi\nabla\tilde{g}\|_{L^1(S^\Gamma)} \left( \|u^+\|_{C^{k+1}(\Omega^+)} + \|u^-\|_{C^{k+1}(\Omega^-)} \right) \\ &\leq C \log(1/h) h^{k+1} \left( \|u^+\|_{C^{k+1}(\Omega^+)} + \|u^-\|_{C^{k+1}(\Omega^-)} \right), \end{aligned}$$

where again we used  $\|\Pi\nabla\tilde{g}\|_{L^1(S^\Gamma)} \leq Ch \log(1/h)$ , which follows from results in [22].  $\square$

REMARK 1. *Since  $u - (u_h + w_T^u) = (I_h u - u_h) + (u - w_T^u - I_h u)$ , by using triangle inequality and Lemma 4,  $u_h + w_T^u$  approximates  $u$  on  $T$  by the same estimates given in Theorems 1 and 2.*

#### 4. STOKES INTERFACE PROBLEM

In this section we consider the Stokes interface problem in two dimensions introduced in equation (1.2). Equivalently, we can incorporate the jump condition, equation (1.2d), as follows

$$\begin{aligned} (4.1a) \quad & -\Delta \mathbf{u} + \nabla p = \mathbf{f} + \mathbf{B} \quad \text{in } \Omega \\ (4.1b) \quad & \nabla \cdot \mathbf{u} = 0 \quad \text{in } \Omega \\ (4.1c) \quad & \mathbf{u} = 0 \quad \text{on } \partial\Omega \end{aligned}$$

where

$$\mathbf{B}(x) = \int_0^A \boldsymbol{\beta}(s) \delta(x - \mathbf{X}(s)) ds,$$

and  $\mathbf{X}(s)$  with  $0 < s < A$  is the arc-length parametrization of the interface  $\Gamma$ .

Following the ideas of LeVeque and Li in [25], we can easily write individual jump conditions for the velocity and the pressure in terms of the tangential and normal component of the data  $\boldsymbol{\beta}$ . Let  $\theta$  be the angle between the  $x$ -direction ( $x$ -axis) and  $\mathbf{n}$ -direction pointing outward the interface  $\Gamma$  at a point  $\mathbf{X}(s)$ . Then, we write the normal and tangential components

$$\hat{\boldsymbol{\beta}}(s) = \begin{pmatrix} \hat{\beta}_1 \\ \hat{\beta}_2 \end{pmatrix} = \begin{pmatrix} \cos(\theta) & \sin(\theta) \\ -\sin(\theta) & \cos(\theta) \end{pmatrix} \boldsymbol{\beta}(s).$$

The jumps conditions for the velocity and the pressure are given by

$$\begin{aligned} (4.2) \quad & [p] = \hat{\beta}_1, \\ & [D_{\mathbf{n}} p] = \frac{d}{ds} \hat{\beta}_2, \\ & [\mathbf{u}] = 0, \\ & [D_{\mathbf{n}} \mathbf{u}] = \boldsymbol{\beta} + \hat{\beta}_1 \mathbf{n}. \end{aligned}$$

For the sake of completeness, we present the derivation of this jumps in Appendix B.

**4.1. The finite element method.** We first present the standard variational formulation of Stokes interface problem (1.2). Find  $(\mathbf{u}, p) \in [H_0^1(\Omega)]^2 \times L_0^2(\Omega)$ , such that

$$(4.3) \quad \begin{aligned} \int_{\Omega} \nabla \mathbf{u} : \nabla \mathbf{v} \, dx - \int_{\Omega} p \nabla \cdot \mathbf{v} \, dx &= \int_{\Omega} \mathbf{f} \cdot \mathbf{v} \, dx + \int_{\Gamma} \boldsymbol{\beta} \cdot \mathbf{v} \, ds \quad \forall \mathbf{v} \in [H_0^1(\Omega)]^2, \\ \int_{\Omega} q \nabla \cdot \mathbf{u} \, dx &= 0 \quad \forall q \in L_0^2(\Omega), \end{aligned}$$

where  $L_0^2(\Omega) = \{q \in L^2(\Omega) : \int_{\Omega} q = 0\}$ .

As before, we consider a sequence of triangulations of  $\bar{\Omega}$ ,  $\mathcal{T}_h$  with  $0 < h < 1$ , and  $\bar{\Omega} = \cup_{T \in \mathcal{T}_h} \bar{T}$ , with the elements  $T$  mutually disjoint. Let  $h_T$  denote the diameter of the element  $T$  and  $h = \max_T h_T$ . We assume that the mesh is quasi-uniform and shape regular.

We consider a class of finite element subspaces  $\mathbf{V}_h \subset [H_0^1(\Omega)]^2$  and  $M_h \subset L_0^2(\Omega)$  satisfying the following assumptions:

**A1**  $\mathbf{V}_h$  and  $M_h$  are a pair of inf-sup stable subspaces, with  $\mathbf{V}_h \subset [H_0^1(\Omega)]^2$ .

**A2** We let  $k \geq 1$  as the maximum integer such that

$$\mathbf{V}_h^k := \left\{ \mathbf{v} \in C(\Omega) \cap [H_0^1(\Omega)]^2 : \mathbf{v}|_T \in [\mathbb{P}^k(T)]^2, \forall T \in \mathcal{T}_h \right\} \subseteq \mathbf{V}_h,$$

and, if  $M_h$  contains the discontinuous pressure space of degree  $k-1$  we let

$$M_h^{k-1} := \left\{ q \in L_0^2(\Omega) : q|_T \in \mathbb{P}^{k-1}(T), \forall T \in \mathcal{T}_h \right\} \subseteq M_h,$$

otherwise

$$M_h^{k-1} := \left\{ q \in C(\Omega) \cap L_0^2(\Omega) : q|_T \in \mathbb{P}^{k-1}(T), \forall T \in \mathcal{T}_h \right\} \subseteq M_h.$$

For instance,  $k=1$  for the pair  $\mathbb{P}_2^2 - \mathbb{P}_0$ , reduced  $\mathbb{P}_2^2 - \mathbb{P}_0$  and mini element, while  $k=2$  for Taylor-Hood  $\mathbb{P}_2^2 - \mathbb{P}_1$ .

We next define the interpolant onto these spaces. We let  $I_h$  be the interpolant defined componentwise in (2.1) onto the space  $\mathbf{V}_h^k$ , and  $J_h$  be the interpolant defined in (2.1) onto the space  $M_h^{k-1}$ , in the case of continuous pressure finite element spaces. Otherwise, if  $M_h$  contains discontinuous finite element pressure spaces we define  $J_h$  to be the  $L^2$  projection onto  $M_h^{k-1}$ .

Find  $(\mathbf{u}_h, p_h) \in \mathbf{V}_h \times M_h$ , such that

$$(4.4) \quad \begin{aligned} \int_{\Omega} \nabla \mathbf{u}_h : \nabla \mathbf{v} \, dx - \int_{\Omega} p_h \nabla \cdot \mathbf{v} \, dx &= \int_{\Omega} \mathbf{f} \cdot \mathbf{v} \, dx + \int_{\Gamma} \boldsymbol{\beta} \cdot \mathbf{v} \, ds \\ &\quad - \sum_{T \in \mathcal{T}_h^{\Gamma}} \left( \int_T \nabla \mathbf{w}_T^{\mathbf{u}} : \nabla \mathbf{v} \, dx + \int_T w_T^p \nabla \cdot \mathbf{v} \, dx \right), \\ \int_{\Omega} q \nabla \cdot \mathbf{u}_h \, dx &= - \sum_{T \in \mathcal{T}_h^{\Gamma}} \int_T q \nabla \cdot \mathbf{w}_T^{\mathbf{u}} \, dx, \end{aligned}$$

for all  $(\mathbf{v}, q) \in \mathbf{V}_h \times M_h$ .

Using the last two equations of (4.2), the correction function  $\mathbf{w}_T^{\mathbf{u}}$  is defined componentwise as in Section 2.3. The same is true for  $w_T^p$  when  $J_h$  is the Lagrange interpolant by using the first two equations of (2.3). In the case  $J_h$  is the  $L^2$  projection we replace equation (2.6) with the condition  $J_h(w_T^p) = 0$ , i.e.

$$(4.5) \quad \left[ D_{\boldsymbol{\eta}}^{k-\ell} w_T^p(x_i^{\ell, T}) \right] = \left[ D_{\boldsymbol{\eta}}^{k-\ell} p(x_i^{\ell, T}) \right] \quad \text{for } 0 \leq i \leq \ell \text{ and } 0 \leq \ell \leq k,$$

$$(4.6) \quad J_h(w_T^p) = 0.$$

Note that each component of  $\mathbf{w}_T^{\mathbf{u}}$  and  $w_T^p$  are obtained independently to each other, therefore, the Lemma 4 can be applied to each one separately.

Similarly to Lemma 4, we have the following estimate for the interpolant  $J_h$  and the correction function  $w_T^p$

$$\|p - J_h p - w_T^p\|_{L^\infty(T^\pm)} \leq C h_T^{k+1} \left( \|p^+\|_{C^{k+1}(T)} + \|p^-\|_{C^{k+1}(T)} \right) \quad \forall T \in \mathcal{T}_h^\Gamma,$$

where  $C$  is a constant depending on the shape regularity of  $T$ , the constant  $k$  and the regularity of  $\Gamma$ . Then, the following result holds and can be proved similar to Lemma 5.

**LEMMA 6.** *Let  $(\mathbf{u}, p)$  be solution of (1.2) and assume that  $\mathbf{u}^\pm \in [C^{k+1}(\Omega^\pm)]^2$  and  $p^\pm \in C^k(\Omega^\pm)$ . Let  $\mathbf{V}_h$  and  $M_h$  be the finite element spaces satisfying assumptions **A1-A2** and consider the definitions above for  $k$ ,  $I_h$  and  $J_h$ . Let  $(\mathbf{u}_h, p_h) \in \mathbf{V}_h \times M_h$  be solution of (4.4). Then, it holds*

$$\begin{aligned} & \int_{\Omega} \nabla(I_h \mathbf{u} - \mathbf{u}_h) : \nabla \mathbf{v} \, dx - \int_{\Omega} (J_h p - p_h) \nabla \cdot \mathbf{v} \, dx \\ & \leq C h^k \|\nabla \mathbf{v}\|_{L^1(\Omega)} \left( \|\mathbf{u}^+\|_{C^{k+1}(\Omega^+)} + \|\mathbf{u}^-\|_{C^{k+1}(\Omega^-)} + \|p^+\|_{C^k(\Omega^+)} + \|p^-\|_{C^k(\Omega^-)} \right) \end{aligned}$$

$$\int_{\Omega} q \nabla \cdot (\mathbf{u}_h - I_h \mathbf{u}) \, dx \leq C h^k \|q\|_{L^1(\Omega)} \left( \|\mathbf{u}^+\|_{C^{k+1}(\Omega^+)} + \|\mathbf{u}^-\|_{C^{k+1}(\Omega^-)} \right),$$

for all  $(\mathbf{v}, q) \in \mathbf{V}_h \times M_h$ .

*Proof.* For the first equation we use (4.3) and (4.4) to obtain

$$\begin{aligned} & \int_{\Omega} \nabla(I_h \mathbf{u} - \mathbf{u}_h) : \nabla \mathbf{v} \, dx - \int_{\Omega} (J_h p - p_h) \nabla \cdot \mathbf{v} \, dx \\ & = \int_{\Omega} \nabla(I_h \mathbf{u} - \mathbf{u}) : \nabla \mathbf{v} \, dx - \int_{\Omega} (J_h p - p) \nabla \cdot \mathbf{v} \, dx \\ & \quad + \sum_{T \in \mathcal{T}_h^\Gamma} \left( \int_T w_T^p \nabla \cdot \mathbf{v} \, dx + \int_T \nabla \mathbf{w}_T^{\mathbf{u}} : \nabla \mathbf{v} \, dx \right) \\ & = \sum_{T \in \mathcal{T}_h \setminus \mathcal{T}_h^\Gamma} \left( \int_T \nabla(I_h \mathbf{u} - \mathbf{u}) : \nabla \mathbf{v} \, dx - \int_T (J_h p - p) \nabla \cdot \mathbf{v} \, dx \right) \\ & \quad + \sum_{T \in \mathcal{T}_h^\Gamma} \left( \int_T \nabla(I_h \mathbf{u} - \mathbf{u} + \mathbf{w}_T^{\mathbf{u}}) : \nabla \mathbf{v} \, dx + \int_T (J_h p - p + w_T^p) \nabla \cdot \mathbf{v} \, dx \right). \end{aligned}$$

Similarly for the second equation we have

$$\begin{aligned} \int_{\Omega} q \nabla \cdot (I_h \mathbf{u} - \mathbf{u}_h) \, dx & = \int_{\Omega} q \nabla \cdot (I_h \mathbf{u} - \mathbf{u}) \, dx + \sum_{T \in \mathcal{T}_h^\Gamma} \int_T q \nabla \cdot \mathbf{w}_T^{\mathbf{u}} \, dx \\ & = \sum_{T \in \mathcal{T}_h \setminus \mathcal{T}_h^\Gamma} \int_T q \nabla \cdot (I_h \mathbf{u} - \mathbf{u}) \, dx + \sum_{T \in \mathcal{T}_h^\Gamma} \int_T q \nabla \cdot (I_h \mathbf{u} - \mathbf{u} + \mathbf{w}_T^{\mathbf{u}}) \, dx. \end{aligned}$$

Then the results follow from the properties of the correction functions  $\mathbf{w}_T^{\mathbf{u}}$  and  $w_T^p$  Lemma 4, and the fact that  $(\mathbf{u}, p)$  is smooth on  $T \in \mathcal{T}_h \setminus \mathcal{T}_h^\Gamma$ .  $\square$

Analogously to the proof of Theorem 1, we can prove the following result using approximate Green's function estimates for the Stokes problem. We give a sketch of the proof.

**Theorem 3.** *Let  $(\mathbf{u}, p)$  be solution of (1.2) and assume that  $\mathbf{u}^\pm \in [C^{k+1}(\Omega^\pm)]^2$  and  $p^\pm \in C^k(\Omega^\pm)$ . Let  $\mathbf{V}_h$  and  $M_h$  be the finite element spaces satisfying assumptions **A1-A2** and consider the definitions above for  $k$ ,  $I_h$  and  $J_h$ . Let  $(\mathbf{u}_h, p_h) \in \mathbf{V}_h \times M_h$  be solution of (4.4). Then, there exists a constant  $C > 0$ , such that*

$$(4.7) \quad \|\nabla(I_h \mathbf{u} - \mathbf{u}_h)\|_{L^\infty(\Omega)} + \|J_h(p) - p_h\|_{L^\infty(\Omega)} \leq Ch^k \left( \|\mathbf{u}^+\|_{C^{k+1}(\Omega^+)} + \|\mathbf{u}^-\|_{C^{k+1}(\Omega^-)} \right. \\ \left. + \|p^+\|_{C^k(\Omega^+)} + \|p^-\|_{C^k(\Omega^-)} \right)$$

*Proof.* Let  $\mathbf{e}_h^u = I_h \mathbf{u} - \mathbf{u}_h$  and suppose that the maximum of  $\partial_{x_j}(\mathbf{e}_h)_i$  ( $i, j = 1, 2$ ) occurs at  $z \in \Omega$ . Suppose  $z \in T \in \mathcal{T}_h$ . Considering the definition and properties of the regularized Dirac delta function  $\delta_h = \delta_h^z$  introduced in (3.9) and (3.10), we define the approximate Green's function  $(\mathbf{g}, \lambda) \in [H_0^1(\Omega)]^2 \times L^2(\Omega)$  such that

$$\begin{aligned} -\Delta \mathbf{g} + \nabla \lambda &= (\partial_{x_j} \delta_h) \mathbf{e}_i \quad \text{in } \Omega, \\ \nabla \cdot \mathbf{g} &= 0 \quad \text{in } \Omega, \\ \mathbf{g} &= 0 \quad \text{on } \partial\Omega, \end{aligned}$$

where  $\mathbf{e}_i$  denotes the  $i$ th standard canonical basis vector of  $\mathbb{R}^2$ . We also consider its finite element approximation  $(\mathbf{g}_h, \lambda_h) \in \mathbf{V}_h \times M_h$  that satisfies

$$\begin{aligned} \int_{\Omega} \nabla(\mathbf{g} - \mathbf{g}_h) : \nabla \chi dx - \int_{\Omega} (\lambda - \lambda_h) \nabla \cdot \chi dx &= 0 \quad \forall \chi \in \mathbf{V}_h, \\ \int_{\Omega} \omega \nabla \cdot (\mathbf{g} - \mathbf{g}_h) dx &= 0 \quad \forall \omega \in M_h. \end{aligned}$$

Using the definition of  $\delta_h$  we have

$$\|(\partial_{x_j} \mathbf{e}_h^u)_i\|_{L^\infty(\Omega)} = |(\partial_{x_j} \mathbf{e}_h^u(z))_i| = \left| \int_{\Omega} \partial_{x_j} \delta_h \mathbf{e}_i \cdot \mathbf{e}_h^u dx \right|,$$

and then

$$\|(\partial_{x_j} \mathbf{e}_h^u)_i\|_{L^\infty(\Omega)} = \left| \int_{\Omega} \nabla \mathbf{g} : \nabla \mathbf{e}_h^u dx - \int_{\Omega} \lambda \nabla \cdot \mathbf{e}_h^u dx \right| = \left| \int_{\Omega} \nabla \mathbf{g}_h : \nabla \mathbf{e}_h^u dx - \int_{\Omega} \lambda_h \nabla \cdot \mathbf{e}_h^u dx \right|.$$

Following the proof of Lemma 6, we see that

$$\int_{\Omega} \nabla \mathbf{g}_h : \nabla \mathbf{e}_h^u dx - \int_{\Omega} \lambda_h \nabla \cdot \mathbf{e}_h^u dx = J_1 + J_2,$$

where

$$\begin{aligned} J_1 &= \sum_{T \in \mathcal{T}_h \setminus \mathcal{T}_h^\Gamma} \left( \int_T \nabla(I_h \mathbf{u} - \mathbf{u}) : \nabla \mathbf{g}_h dx + \int_T \lambda_h \nabla \cdot (I_h \mathbf{u} - \mathbf{u}) dx \right) \\ J_2 &= \sum_{T \in \mathcal{T}_h^\Gamma} \left( \int_T \nabla(I_h \mathbf{u} - \mathbf{u} + \mathbf{w}_T^u) : \nabla \mathbf{g}_h dx + \int_T \lambda_h \nabla \cdot (I_h \mathbf{u} - \mathbf{u} + \mathbf{w}_T^u) dx \right). \end{aligned}$$

As in the proof of Theorem 1, the estimates of  $J_1$  and  $J_2$  follows from the properties of the correction functions and bounds for the Green's functions that can be found for example in [15, 17]. The estimate for the error of the pressure follows from similar arguments, we leave the details to the reader.  $\square$



REMARK 2. Using the same arguments as Remark 1, we can establish the same a priori error estimates given in Theorem 3 for  $\mathbf{u} - (\mathbf{u}_h + \mathbf{w}_T^u)$  and for  $p - (p_h + w_T^p)$ . We note that the method (4.4) gives  $p_h \in M_h$ , therefore, if  $J_h$  is the  $L^2$  projection, then  $(p_h + w_T^p) \in L_0^2(\Omega)$ , if  $J_h$  is the interpolation operator,  $p_h + w_T^p$  might not have average zero and a constant  $O(h^{k+1})$  must be added to make it in  $L_0^2(\Omega)$ .

## 5. NUMERICAL EXPERIMENTS

We illustrate the performance of our method with some numerical examples. We consider the square domain  $\Omega = [-1, 1]^2$ , and we triangulate the domain with structured and non-structured triangular meshes. We tabulate the  $L^2$  and  $H^1$  semi-norm errors as well as the  $L^\infty$  and  $W^{1,\infty}$  semi-norm errors, with their respective order of convergence. Plots of approximate solutions and rate of convergence are also provided. For the case when the interface is not a straight line we need to integrate over curved region. We address this problem in Appendix C giving explicit quadrature formulas.

**5.1. Numerical examples for Poisson interface problem (1.1).** Let  $u$  be the exact solution of problem (1.1),  $u_h$  be the solution by the method defined in (2.4). We define the error with respect to the Lagrange interpolant  $I_h$  and the respective order of convergence (associated to the error and the norm) as follows

$$e_h := u_h - I_h u, \quad r(e, \|\cdot\|) := \frac{\log(\|e_{h_{l+1}}\|/\|e_{h_l}\|)}{\log(h_{l+1}/h_l)}.$$

We will illustrate our results with two numerical examples using piecewise quadratic polynomials, i.e.,  $k = 2$ . Note that  $I_h$  is then the piecewise quadratic Lagrange interpolant.

**Ex. 5.1.1** Consider an exact solution of problem (1.1)

$$u(x, y) = \begin{cases} (2/3 + x)^3, & \text{if } x < 1/3 \\ (4/3 - x)^3, & \text{if } x \geq 1/3. \end{cases}$$

In this case, the interface  $\Gamma$  is a straight line. We summarize the results for structured and non-structured meshes in the following tables.

$h$	$\ e_h\ _{L^2}$	$r$	$\ e_h\ _{L^\infty}$	$r$	$\ \nabla e_h\ _{L^2}$	$r$	$\ \nabla e_h\ _{L^\infty}$	$r$
3.5e-1	8.41e-5		1.83e-4		1.53e-3		3.72e-3	
1.8e-1	7.49e-6	3.49	2.33e-5	2.97	2.76e-4	2.47	9.29e-4	2.00
8.8e-2	6.63e-7	3.50	2.92e-6	2.99	4.92e-5	2.49	2.32e-4	2.00
4.4e-2	5.85e-8	3.50	3.64e-7	3.00	8.74e-6	2.49	5.80e-5	2.00
2.2e-2	5.16e-9	3.50	4.56e-8	3.00	1.55e-6	2.50	1.45e-5	2.00

TABLE 1. Errors and orders of convergence of method (2.4) for **Ex. 5.1.1**, on structured meshes.

$h$	$\ e_h\ _{L^2}$	r	$\ e_h\ _{L^\infty}$	r	$\ \nabla e_h\ _{L^2}$	r	$\ \nabla e_h\ _{L^\infty}$	r
5.0e-1	4.92e-4		1.99e-3		9.95e-3		9.54e-2	
2.5e-1	3.86e-5	3.67	2.37e-4	3.07	1.71e-3	2.54	2.41e-2	1.99
1.3e-1	3.86e-6	3.32	4.42e-5	2.43	3.57e-4	2.26	7.98e-3	1.59
6.3e-2	3.89e-7	3.31	5.99e-6	2.88	7.82e-5	2.19	1.92e-3	2.06
3.1e-2	4.44e-8	3.13	7.74e-7	2.95	1.87e-5	2.06	5.06e-4	1.92

TABLE 2. Errors and orders of convergence of method (2.4) for **Ex. 5.1.1**, on non-structured meshes.

We observe optimal order of convergence for both, structured and non-structured meshes, confirming the results of Theorem 1 and 2. By structured mesh we mean bisecting in the northeast direction each cell of a uniform rectangular grid. When  $\Gamma$  is a straight line, the numerical quadrature is simplified, otherwise we need to integrate over curved elements (see Appendix C). A superconvergence phenomenon is also observed in the  $L^2$  norm for structured meshes, inherited from the problem without interface.

**Ex. 5.1.2** Consider an exact solution of problem (1.1)

$$u(x) = \begin{cases} 1, & \text{if } r \leq 1/3 \\ 1 - \log(3r), & \text{if } r > 1/3 \end{cases} \quad x \in [-1, 1]^2,$$

where  $r = \|x\|_2$ . We summarize the errors and order of convergence in the following tables

$h$	$\ e_h\ _{L^2}$	r	$\ e_h\ _{L^\infty}$	r	$\ \nabla e_h\ _{L^2}$	r	$\ \nabla e_h\ _{L^\infty}$	r
7.1e-1	1.70e-2		4.76e-2		1.89e-1		4.37e-1	
3.5e-1	1.73e-3	3.29	5.09e-3	3.22	3.66e-2	2.37	1.29e-1	1.76
1.8e-1	1.49e-4	3.54	7.41e-4	2.78	5.66e-3	2.69	3.05e-2	2.08
8.8e-2	1.22e-5	3.61	6.82e-5	3.44	8.48e-4	2.74	5.99e-3	2.34
4.4e-2	1.16e-6	3.40	1.39e-5	2.29	1.54e-4	2.46	1.78e-3	1.75
2.2e-2	1.09e-7	3.41	2.08e-6	2.74	2.71e-5	2.51	5.06e-4	1.81
1.1e-2	9.16e-9	3.57	2.39e-7	3.12	4.71e-6	2.52	1.36e-4	1.90

TABLE 3. Errors and orders of convergence of method (2.4) for **Ex. 5.1.2**, on structured meshes.

$h$	$\ e_h\ _{L^2}$	r	$\ e_h\ _{L^\infty}$	r	$\ \nabla e_h\ _{L^2}$	r	$\ \nabla e_h\ _{L^\infty}$	r
1.8e-1	8.87e-5		3.97e-4		3.80e-3		2.53e-2	
9.0e-2	9.73e-6	3.29	7.46e-5	2.49	9.04e-4	2.14	7.43e-3	1.82
4.7e-2	1.11e-6	3.33	1.06e-5	3.00	2.15e-4	2.21	2.58e-3	1.63
2.4e-2	1.30e-7	3.15	1.42e-6	2.95	5.06e-5	2.13	7.34e-4	1.84
1.2e-2	1.59e-8	3.14	2.24e-7	2.76	1.27e-5	2.07	2.16e-4	1.83
6.1e-3	1.96e-9	3.04	3.15e-8	2.85	3.15e-6	2.02	5.55e-5	1.98

TABLE 4. Errors and orders of convergence of method (2.4) for **Ex. 5.1.2**, on non-structured meshes.

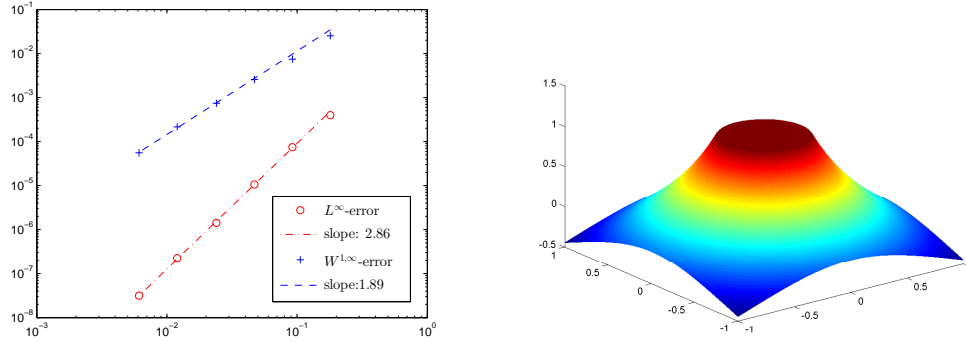


FIGURE 2. Plot of the  $L^\infty$  and  $W^{1,\infty}$  errors (left) and the approximate solution (right) by method (2.4) for **Ex. 5.1.2**, on non-structured meshes.

In this example we are considering a curved interface, then quadrature rules over elements with one curved edge are needed. In Appendix C we address this issue giving higher-order quadrature rules over this kind of elements. We observe optimal convergence, confirming our results in Theorems 1 and 2. As in the previous example, superconvergence phenomenon is observed in the case of structured meshes.

**5.2. Numerical examples for Stokes interface problem (1.2).** In order to illustrate our method for the Stokes interface problem we consider the pair of inf-sup stable finite element spaces  $\mathbf{V}_h$  and  $M_h$ , piecewise quadratic polynomial for the velocity and piecewise constant polynomials for the pressure ( $\mathbb{P}_2 - \mathbb{P}_0$ ). We define the errors

$$e_h^{\mathbf{u}} := \mathbf{u}_h - I_h \mathbf{u}, \quad e_h^p := p_h - J_h p,$$

With this finite element spaces, the value of  $k$  is 1 (see assumption **A2**), then  $I_h$  is the piecewise linear Lagrange interpolant and  $J_h$  is the  $L^2$  projection on the spaces of piecewise constant polynomials. We note that the optimal order of convergence for velocity is 2, this justify we are using the piecewise linear Lagrange interpolant although we are using piecewise quadratic in our finite element space.

**Ex. 5.2.1** Consider an exact solution of Stokes problem (1.2) on  $\Omega = [-1, 1]$

$$\mathbf{u}(x, y) = \begin{pmatrix} 0 \\ u_2(x, y) \end{pmatrix}, \quad u_2(x, y) = \begin{cases} 2/3 + x, & \text{if } x \leq 1/3, \\ 4/3 - x, & \text{if } x > 1/3 \end{cases},$$

$$p(x, y) = \begin{cases} x^2 + y^2 + 1/3, & \text{if } x \leq 1/3, \\ x^2 + y^2 - 8/3, & \text{if } x > 1/3 \end{cases} \quad (x, y) \in \Omega.$$

In this case the interface is  $\Gamma = \{(x, y) \in \Omega : x = 1/3\}$ .

$h$	$\ e_h^{\mathbf{u}}\ _{L^2}$	r	$\ e_h^{\mathbf{u}}\ _{L^\infty}$	r	$\ \nabla e_h^{\mathbf{u}}\ _{L^2}$	r	$\ \nabla e_h^{\mathbf{u}}\ _{L^\infty}$	r
3.5e-1	1.27e-2		1.22e-2		1.55e-1		1.92e-1	
1.8e-1	3.42e-3	1.89	3.42e-3	1.83	7.86e-2	0.98	1.08e-1	0.83
8.8e-2	8.84e-4	1.95	9.67e-4	1.82	3.93e-2	1.00	5.71e-2	0.92
4.4e-2	2.25e-4	1.98	2.60e-4	1.89	1.96e-2	1.00	3.06e-2	0.90
2.2e-2	5.66e-5	1.99	6.84e-5	1.93	9.79e-3	1.00	1.58e-2	0.95

TABLE 5. Errors and orders of convergence for velocity, on structured meshes.

$h$	$\ e_h^p\ _{L^2}$	r	$\ e_h^p\ _{L^\infty}$	r
3.5e-1	6.01e-2		9.30e-2	
1.8e-1	2.22e-2	1.44	6.07e-2	0.62
8.8e-2	7.45e-3	1.58	3.52e-2	0.79
4.4e-2	2.34e-3	1.67	1.92e-2	0.88
2.2e-2	7.09e-4	1.73	1.00e-2	0.93

TABLE 6. Errors and orders of convergence for the pressure, on structured meshes.

We observe optimal convergence for the velocity and pressure, supporting our result in Theorem 3. We also observe a superconvergence phenomenon for the  $L^2$  error of the pressure.

**Ex. 5.2.2** Consider a exact solution of Stokes problem (1.2) on  $\Omega = [-1, 1]$

$$\mathbf{u}(x, y) = \begin{pmatrix} u_1(x, y) = \begin{cases} 3y & \text{if } r \leq 1/3, \\ \frac{4y}{3r} - y & \text{if } r > 1/3 \end{cases} \\ u_2(x, y) = \begin{cases} -3, & \text{if } r \leq 1/3, \\ x - \frac{4x}{3r} & \text{if } r > 1/3 \end{cases} \end{pmatrix},$$

$$p(x, y) = \begin{cases} 4 - \frac{\pi}{9} & \text{if } r \leq 1/3, \\ \frac{\pi}{9} & \text{if } r > 1/3 \end{cases},$$

for  $(x, y) \in \Omega$  and  $r = \sqrt{x^2 + y^2}$ . In this case the interface is the circumference of radius 3, i.e.  $\Gamma = \{(x, y) \in \Omega : r = \frac{1}{3}\}$ .

$h$	$\ e_h^u\ _{L^2}$	r	$\ e_h^u\ _{L^\infty}$	r	$\ \nabla e_h^u\ _{L^2}$	r	$\ \nabla e_h^u\ _{L^\infty}$	r
2.5e-01	3.02e-2		3.99e-2		5.16e-1		8.10e-1	
1.3e-01	8.48e-3	1.83	1.79e-2	1.16	2.79e-1	0.89	5.48e-1	0.56
6.3e-02	2.03e-3	2.06	5.35e-3	1.74	1.36e-1	1.03	3.35e-1	0.71
3.1e-02	5.09e-4	2.00	1.68e-3	1.67	6.84e-2	0.99	2.06e-1	0.70
1.6e-02	1.26e-4	2.02	4.22e-4	1.99	3.36e-2	1.03	1.05e-1	0.97

TABLE 7. Errors and orders of convergence for velocity, on structured meshes.

$h$	$\ e_h^p\ _{L^2}$	r	$\ e_h^p\ _{L^\infty}$	r
2.5e-1	1.39e-1		1.84e-1	
1.3e-1	3.39e-2	2.04	7.71e-2	1.26
6.3e-2	1.32e-2	1.36	4.29e-2	0.85
3.1e-2	3.79e-3	1.80	2.36e-2	0.86
1.6e-2	1.46e-3	1.38	1.27e-2	0.90

TABLE 8. Errors and orders of convergence for pressure, on structured meshes.

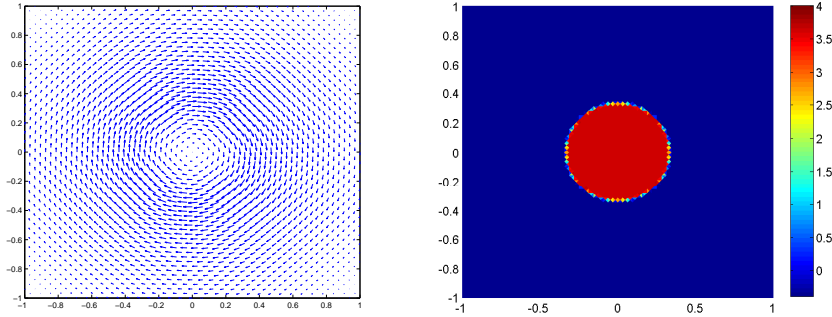


FIGURE 3. Plot of velocity (left) and discontinuous pressure (right).

We observe optimal convergence for the velocity and pressure, confirming our result in Theorem 3. We also observe from the plot of the approximate pressure (see Figure **Ex. 5.2.2**) that there is not pollution beyond the interface.

## 6. FINAL DISCUSSION AND FUTURE WORK

In this paper we have developed higher-order finite element methods for Poisson interface problem (1.1) and Stokes interface problem (1.2). We have proved optimal convergence results for the methods, recovering the convergence of the finite element method for a problem without interface. We have presented numerical experiments validating our theoretical results.

The algorithms and theory developed point to a number of promising research directions and opportunities. We expect that our techniques will yield methods that are able to handle high contrast problems for elliptic problems with discontinuous diffusion coefficients. Additionally, it is natural to move in the direction of evolution problems, such as the time-dependent version of problem (1.2) and also for Navier-Stokes equations, and also for even more challenging problems such as fluid-structure interactions.

### APPENDIX A. PROOF OF ESTIMATE (3.17)

We first use a dyadic decomposition of  $\Omega$ .  $\Omega = \Omega^* \cup \bigcup_{j=1}^J \Omega_j$  where  $\Omega_j := \{x \in \Omega : d_{j+1} \leq |x - z| \leq d_j\}$ , and  $d_j = 2^{-j}$ . Here,  $J = \log_2(1/h)$  and  $\Omega^* = \Omega \cap B_h$  where  $B_h$  is the ball of radius  $h$  centered  $z$ .

Let us use the notation  $D_j = \Omega_j \cap \partial R_h \setminus \partial \Omega$  and  $D^* = \Omega^* \cap \partial R_h \setminus \partial \Omega$  then we have

$$\|D_{\mathbf{n}}g\|_{L^1(\partial R_h \setminus \partial \Omega)} = \|D_{\mathbf{n}}g\|_{L^1(D^*)} + \sum_{j=1}^J \|D_{\mathbf{n}}g\|_{L^1(D_j)}$$

First we bound the first term. Using Cauchy-Schwarz inequality and the fact the one dimensional measure of  $D^*$  is  $h$  we have

$$\|D_{\mathbf{n}}g\|_{L^1(D^*)} \leq Ch^{1/2} \|\nabla g\|_{L^2(D^*)}.$$

If we use a trace inequality then we have

$$h^{1/2} \|\nabla g\|_{L^2(D^*)} \leq C(\|\nabla g\|_{L^2(\Omega^* \cap B_h)} + h\|D^2g\|_{L^2(\Omega^* \cap B_h)}) \leq C(\|\nabla g\|_{L^2(\Omega)} + h\|D^2g\|_{L^2(\Omega)}).$$

Elliptic regularity will give

$$\|\nabla g\|_{L^2(\Omega)} + h\|D^2g\|_{L^2(\Omega)} \leq C(\|\delta_h\|_{L^2(\Omega)} + h\|\delta_h\|_{H^1(\Omega)}) \leq \frac{C}{h},$$

which shows that

$$\|D_{\mathbf{n}}g\|_{L^1(D^*)} \leq \frac{C}{h}.$$

To take care of the sum we use Cauchy-Schwarz inequality again and get

$$\sum_{j=1}^J \|D_{\mathbf{n}}g\|_{L^1(D_j)} \leq \sum_{j=1}^J d_j \|\nabla g\|_{L^\infty(D_j)}$$

Using the Green's function representation of  $g$  and the fact that  $D_j$  is distance  $d_j$  away from  $z$  one can show (see [22])

$$\|\nabla g\|_{L^\infty(D_j)} \leq \frac{C}{d_j}.$$

Hence,

$$\sum_{j=1}^J \|D_{\mathbf{n}}g\|_{L^1(D_j)} \leq C \sum_{j=1}^J \frac{1}{d_j} = C \sum_{j=1}^J \frac{1}{d_j} = C(2^{J+1} - 1) \leq \frac{C}{h}.$$

#### APPENDIX B. DERIVATION OF JUMPS (4.2)

We define for  $\epsilon > 0$  the set  $\Omega_\epsilon = \{x \in \Omega : \text{dist}(x, \Gamma) < \epsilon\}$ , where  $\text{dist}$  is the standard distance function. We will also denote  $\Gamma_\epsilon^\pm = \partial\Omega_\epsilon \cap \Omega^\pm$ . From equation (4.1a), taking divergence, multiplying by an arbitrary  $\phi \in C^2$  of compact support in  $\Omega_\epsilon$  and integrating we obtain

$$\begin{aligned} \int_{\Omega_\epsilon} \nabla \cdot \nabla p \phi dx &= \int_{\Omega_\epsilon} \nabla \cdot f \phi dx + \int_{\Omega_\epsilon} \nabla \cdot \mathbf{B} \phi dx \\ (B.1) \qquad \qquad \qquad &= \int_{\Omega_\epsilon} \nabla \cdot f \phi dx - \int_{\Gamma} \boldsymbol{\beta} \cdot \nabla \phi ds. \end{aligned}$$

For the left-hand side of the equation above we integrate by parts twice obtaining

$$\begin{aligned} \int_{\Omega_\epsilon} \nabla \cdot \nabla p \phi dx &= \int_{\Gamma_\epsilon^+} Dp^+ \cdot n \phi ds + \int_{\Gamma_\epsilon^-} Dp^- \cdot n \phi ds \\ &\quad - \int_{\Gamma_\epsilon^+} D\phi \cdot np^+ ds - \int_{\Gamma_\epsilon^-} D\phi \cdot np^- ds + \int_{\Omega_\epsilon} p \nabla \cdot \nabla \phi dx. \end{aligned}$$

By the definitions of  $\Gamma_\epsilon^\pm$  we can fix its normal vectors by the normal vector to the interface  $\Gamma$ . Then, taking the limit as  $\epsilon$  goes to zero we obtain

$$(B.2) \qquad \lim_{\epsilon \rightarrow 0} \int_{\Omega_\epsilon} p \nabla \cdot \nabla \phi dx = 0$$

$$(B.3) \qquad \lim_{\epsilon \rightarrow 0} \int_{\Omega_\epsilon} \nabla \cdot \nabla p \phi dx = \int_{\Gamma} [Dp \cdot n] \phi ds - \int_{\Gamma} D\phi \cdot n [p] ds$$

We need to write the right-hand side in (B.1) in terms of the normal and tangential derivative. Let  $\theta$  be the angle between the  $x$  direction ( $x$ -axis) and  $n$  direction and let  $R(\theta)$  the rotation matrix defined by

$$R(\theta) = \begin{pmatrix} \cos(\theta) & -\sin(\theta) \\ \sin(\theta) & \cos(\theta) \end{pmatrix}$$

Then,  $\nabla\phi = (D_{\mathbf{n}}\phi, D_{\mathbf{t}}\phi)R(\theta)^t$ . Using this equivalency in (B.1) and integration by parts we obtain

$$\begin{aligned} \int_{\Gamma} \boldsymbol{\beta} \cdot \nabla\phi ds &= \int_{\Gamma} \boldsymbol{\beta} \cdot ((D_{\mathbf{n}}\phi, D_{\mathbf{t}}\phi)R(\theta)^t) ds \\ &= \int_{\Gamma} (\boldsymbol{\beta}R(\theta)) \cdot (D_{\mathbf{n}}\phi, D_{\mathbf{t}}\phi) ds \\ &= \int_{\Gamma} \hat{\boldsymbol{\beta}} \cdot (D_{\mathbf{n}}\phi, D_{\mathbf{t}}\phi) ds \\ &= \int_{\Gamma} \hat{\beta}_1 D_{\mathbf{n}}\phi ds - \int_{\Gamma} \frac{\partial}{\partial s} \hat{\beta}_2 \phi ds \end{aligned}$$

Here we have defined  $\hat{\boldsymbol{\beta}} = \boldsymbol{\beta}R(\theta)$ . Matching this result with the limits in (B.2) we can conclude that

$$(B.4) \quad [p] = \hat{\beta}_1 \quad [D_{\mathbf{n}}p] = \frac{\partial}{\partial s} \hat{\beta}_2.$$

Now, to get the normal jump of the gradient of the velocity we applied equation (1.2d), resulting

$$(B.5) \quad [D_{\mathbf{n}}\mathbf{u}] = \boldsymbol{\beta} + [pn] = \boldsymbol{\beta} + \hat{\beta}_1 \mathbf{n}.$$

#### APPENDIX C. QUADRATURE OVER CURVED ELEMENTS.

The method defined in (2.4) requires the integration, over an element  $T \in \mathcal{T}_h^{\Gamma}$ , of  $\nabla w_T^u \cdot \nabla v$ . Now, since the correction function  $w_T^u$  is defined as piecewise polynomial of degree  $k$  on each piece of the restriction  $T^{\pm} = T \cap \Omega^{\pm}$ , we need some quadrature formulas on this region, say curved elements (polygons with one edge curved). To do so, we observe that  $L_T$  divides  $T$  in two regular polygons  $\tilde{T}^{\pm}$ , one is a triangle and the other a quadrilateral, see figure 4. In order to make the presentation clearer, we will write the integral in terms of the coordinates system  $(\tau, \eta)$  (associated to the vector  $\boldsymbol{\tau}$  and  $\boldsymbol{\eta}$ , with  $\boldsymbol{\eta}$  pointing outward  $T^-$ ) such that the origin is the midpoint of  $L_T$ , the point  $\frac{y_T + z_T}{2}$ . Let  $f \in C^{n+1}(T)$ , then we write

$$(C.1) \quad \int_{T^{\pm}} f(x, y) dx dy = \int_{\tilde{T}^{\pm}} f(x, y) dx dy \pm \int_{-r_T/2}^{r_T/2} \int_0^{\gamma(\tau)} f(\tau, \eta) d\eta d\tau$$

where,  $\gamma(\tau)$  is the equation for the curve  $\Gamma$  on  $T$ . The first integral in (C.1) is over a polygon (triangle or quadrilateral) and we can use quadrature rules over polygons to approximate it, whereas the second integral is related to the curve, and we will use some Gaussian quadratures. First step, we take  $n$  Gaussian points  $\{\tau_i\}_{i=1}^n$  over the segment  $L_T$ , equivalently, the interval  $[-r_T/2, r_T/2]$  in the  $(\tau, \eta)$ -axis, and for each point we compute its projection onto the curve  $\Gamma$  in the  $\boldsymbol{\eta}$ -direction, say  $\gamma(\tau_i)$ . Now we compute, the Gaussian points for the segment  $[0, \gamma(\tau_i)]$ , we denote them by  $\{\eta_{i,j}\}_{j=1}^n$ . Therefore

$$\int_{-r_T/2}^{r_T/2} \int_0^{\gamma(\tau)} f(\tau, \eta) d\tau d\eta \approx \sum_{i=1}^n \frac{r_T}{2} \omega_i \sum_{j=1}^n \frac{|\gamma(\tau_i)|}{2} \omega_j f(\tau_i, \eta_{i,j})$$

where  $\omega_i$  are the weights in the interval  $[-1, 1]$ . See figure 4 for illustration of this notation. See also figure 1.

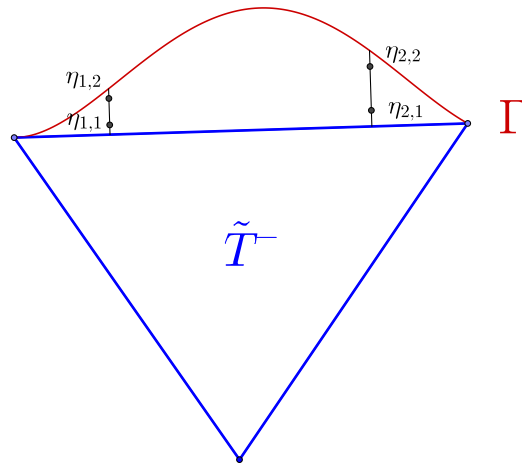


FIGURE 4. Illustration of the Gauss points.

## REFERENCES

- [1] Slimane Adjerid, Mohamed Ben-Romdhane, and Tao Lin. Higher degree immersed finite element methods for second-order elliptic interface problems. *Int. J. Numer. Anal. Model.*, 11(3):541–566, 2014.
- [2] Chandrasekhar Annavarapu, Martin Hautefeuille, and John E. Dolbow. A robust Nitsche’s formulation for interface problems. *Comput. Methods Appl. Mech. Engrg.*, 225/228:44–54, 2012.
- [3] J. Thomas Beale and Anita T. Layton. On the accuracy of finite difference methods for elliptic problems with interfaces. *Commun. Appl. Math. Comput. Sci.*, 1:91–119 (electronic), 2006.
- [4] Jacob Bedrossian, James H. von Brecht, Siwei Zhu, Eftychios Sifakis, and Joseph M. Teran. A second order virtual node method for elliptic problems with interfaces and irregular domains. *J. Comput. Phys.*, 229(18):6405–6426, 2010.
- [5] Daniele Boffi, Nicola Cavallini, and Lucia Gastaldi. Finite element approach to immersed boundary method with different fluid and solid densities. *Math. Models Methods Appl. Sci.*, 21(12):2523–2550, 2011.
- [6] Daniele Boffi and Lucia Gastaldi. A finite element approach for the immersed boundary method. *Comput. & Structures*, 81(8-11):491–501, 2003. In honour of Klaus-Jürgen Bathe.
- [7] Susanne C. Brenner and L. Ridgway Scott. *The mathematical theory of finite element methods*, volume 15 of *Texts in Applied Mathematics*. Springer-Verlag, New York, 1994.
- [8] Erik Burman. Ghost penalty. *C. R. Math. Acad. Sci. Paris*, 348(21-22):1217–1220, 2010.
- [9] Erik Burman. Projection stabilization of Lagrange multipliers for the imposition of constraints on interfaces and boundaries. *Numer. Methods Partial Differential Equations*, 30(2):567–592, 2014.
- [10] Erik Burman and Peter Hansbo. Fictitious domain finite element methods using cut elements: I. A stabilized Lagrange multiplier method. *Comput. Methods Appl. Mech. Engrg.*, 199(41-44):2680–2686, 2010.
- [11] Erik Burman and Peter Hansbo. Fictitious domain finite element methods using cut elements: II. A stabilized Nitsche method. *Appl. Numer. Math.*, 62(4):328–341, 2012.
- [12] Erik Burman and Paolo Zunino. Numerical approximation of large contrast problems with the unfitted Nitsche method. In *Frontiers in numerical analysis—Durham 2010*, volume 85 of *Lect. Notes Comput. Sci. Eng.*, pages 227–282. Springer, Heidelberg, 2012.
- [13] C.-C. Chu, I. G. Graham, and T.-Y. Hou. A new multiscale finite element method for high-contrast elliptic interface problems. *Math. Comp.*, 79(272):1915–1955, 2010.
- [14] David Gilbarg and Neil S. Trudinger. *Elliptic partial differential equations of second order*. Classics in Mathematics. Springer-Verlag, Berlin, 2001. Reprint of the 1998 edition.
- [15] Vivette Girault, Ricardo H. Nochetto, and Ridgway Scott. Stability of the finite element Stokes projection in  $W^{1,\infty}$ . *C. R. Math. Acad. Sci. Paris*, 338(12):957–962, 2004.
- [16] Yan Gong, Bo Li, and Zhilin Li. Immersed-interface finite-element methods for elliptic interface problems with nonhomogeneous jump conditions. *SIAM J. Numer. Anal.*, 46(1):472–495, 2007/08.
- [17] J. Guzmán and D. Leykekhman. Pointwise error estimates of finite element approximations to the Stokes problem on convex polyhedra. *Math. Comp.*, 81(280):1879–1902, 2012.



- [18] Xiaoming He, Tao Lin, and Yanping Lin. Immersed finite element methods for elliptic interface problems with non-homogeneous jump conditions. *Int. J. Numer. Anal. Model.*, 8(2):284–301, 2011.
- [19] Songming Hou and Xu-Dong Liu. A numerical method for solving variable coefficient elliptic equation with interfaces. *J. Comput. Phys.*, 202(2):411–445, 2005.
- [20] Songming Hou, Peng Song, Liqun Wang, and Hongkai Zhao. A weak formulation for solving elliptic interface problems without body fitted grid. *J. Comput. Phys.*, 249:80–95, 2013.
- [21] Songming Hou, Wei Wang, and Liqun Wang. Numerical method for solving matrix coefficient elliptic equation with sharp-edged interfaces. *J. Comput. Phys.*, 229(19):7162–7179, 2010.
- [22] Manuel Sanchez-Uribe Johnny Guzman and Marcus Sarkis. On the accuracy of finite element approximations to a class of interface problems. Technical Report 2014-6, Scientific Computing Group, Brown University, Providence, RI, USA, March 2014.
- [23] Long Lee and Randall J. LeVeque. An immersed interface method for incompressible Navier-Stokes equations. *SIAM J. Sci. Comput.*, 25(3):832–856, 2003.
- [24] Randall J. LeVeque and Zhi Lin Li. The immersed interface method for elliptic equations with discontinuous coefficients and singular sources. *SIAM J. Numer. Anal.*, 31(4):1019–1044, 1994.
- [25] Randall J. LeVeque and Zhilin Li. Immersed interface methods for Stokes flow with elastic boundaries or surface tension. *SIAM J. Sci. Comput.*, 18(3):709–735, 1997.
- [26] Zhilin Li and Ming-Chih Lai. The immersed interface method for the Navier-Stokes equations with singular forces. *J. Comput. Phys.*, 171(2):822–842, 2001.
- [27] Alexandre Noll Marques, Jean-Christophe Nave, and Rodolfo Ruben Rosales. A correction function method for Poisson problems with interface jump conditions. *J. Comput. Phys.*, 230(20):7567–7597, 2011.
- [28] Charles S. Peskin. Numerical analysis of blood flow in the heart. *J. Computational Phys.*, 25(3):220–252, 1977.
- [29] Charles S. Peskin. The immersed boundary method. *Acta Numer.*, 11:479–517, 2002.
- [30] Rolf Rannacher and Ridgway Scott. Some optimal error estimates for piecewise linear finite element approximations. *Math. Comp.*, 38(158):437–445, 1982.
- [31] P.-A. Raviart and J. M. Thomas. A mixed finite element method for 2nd order elliptic problems. In *Mathematical aspects of finite element methods (Proc. Conf., Consiglio Naz. delle Ricerche (C.N.R.), Rome, 1975)*, pages 292–315. Lecture Notes in Math., Vol. 606. Springer, Berlin, 1977.
- [32] Cheng Tu and Charles S. Peskin. Stability and instability in the computation of flows with moving immersed boundaries: a comparison of three methods. *SIAM J. Sci. Statist. Comput.*, 13(6):1361–1376, 1992.

<sup>1</sup> DIVISION OF APPLIED MATHEMATICS, BROWN UNIVERSITY, PROVIDENCE, RI 02912, USA  
*E-mail address:* <sup>1</sup>johnny\_guzman@brown.edu

<sup>2</sup> DIVISION OF APPLIED MATHEMATICS, BROWN UNIVERSITY, PROVIDENCE, RI 02912, USA  
*E-mail address:* <sup>2</sup>manuel\_sanchez\_uribe@brown.edu

<sup>3</sup> DEPARTMENT OF MATHEMATICAL SCIENCES AT WORCESTER POLYTECHNIC INSTITUTE, 100 INSTITUTE ROAD, WORCESTER, MA 01609, USA.  
*E-mail address:* <sup>2</sup>msarkis@wpi.edu